

Luxor Street, Brixton, SE5

3 bedroom maisonette for sale

£600,000

Leasehold

Property Details

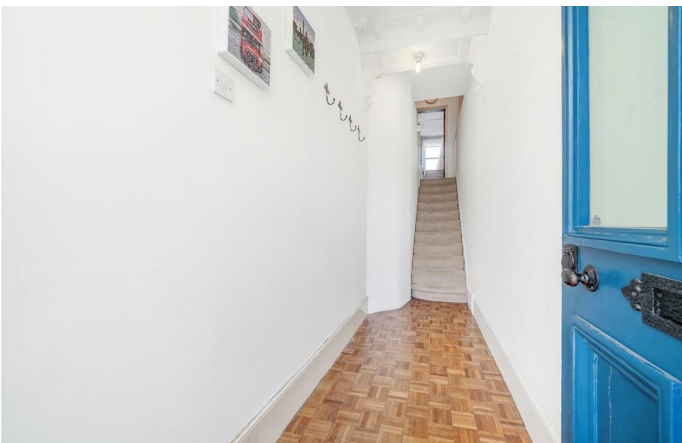
A spacious three bedroom, split-level maisonette, arranged over the top floors of a charming period townhouse. This incredibly generous flat has a wonderfully homely feel, being split over multiple floors and having the huge benefit of a private entrance. With large sash windows is a spacious reception spanning the width of the property and brimming with characterful charm. Semi-open-plan, the kitchen is adjacent, allowing a lovely flow of light to these combined social spaces, whilst providing plenty of space to host around a dining table. With a country feel the kitchen has a butler sink, wooden surfaces and shaker style cabinetry flanking a large window. The bathroom is traditionally furnished with a double-ended bathtub, shower above, modern metro tiles and dual aspect windows. Upstairs provides three bedrooms, two of which are particularly generous in size, with the third still being a genuine double which could also be repurposed to meet needs. Additional storage is available in the form of a hallway cupboard. Copious storage is on offer within the large loft, with precedent having been set should the purchaser wish to seek permissions to extend into this space.

Council tax band D

EPC rating D (67)

Features

- Three bedrooms
- Period maisonette
- Private entrance
- Demised loft space with the potential to extend STNP
- Bright and spacious
- Split-level
- Two-minute walk to the station
- Access to Brixton, Camberwell and Herne Hill
- Minutes from Ruskin Park
- Chain-free



Luxor Street, Brixton, SE5

Luxor Street, SE5

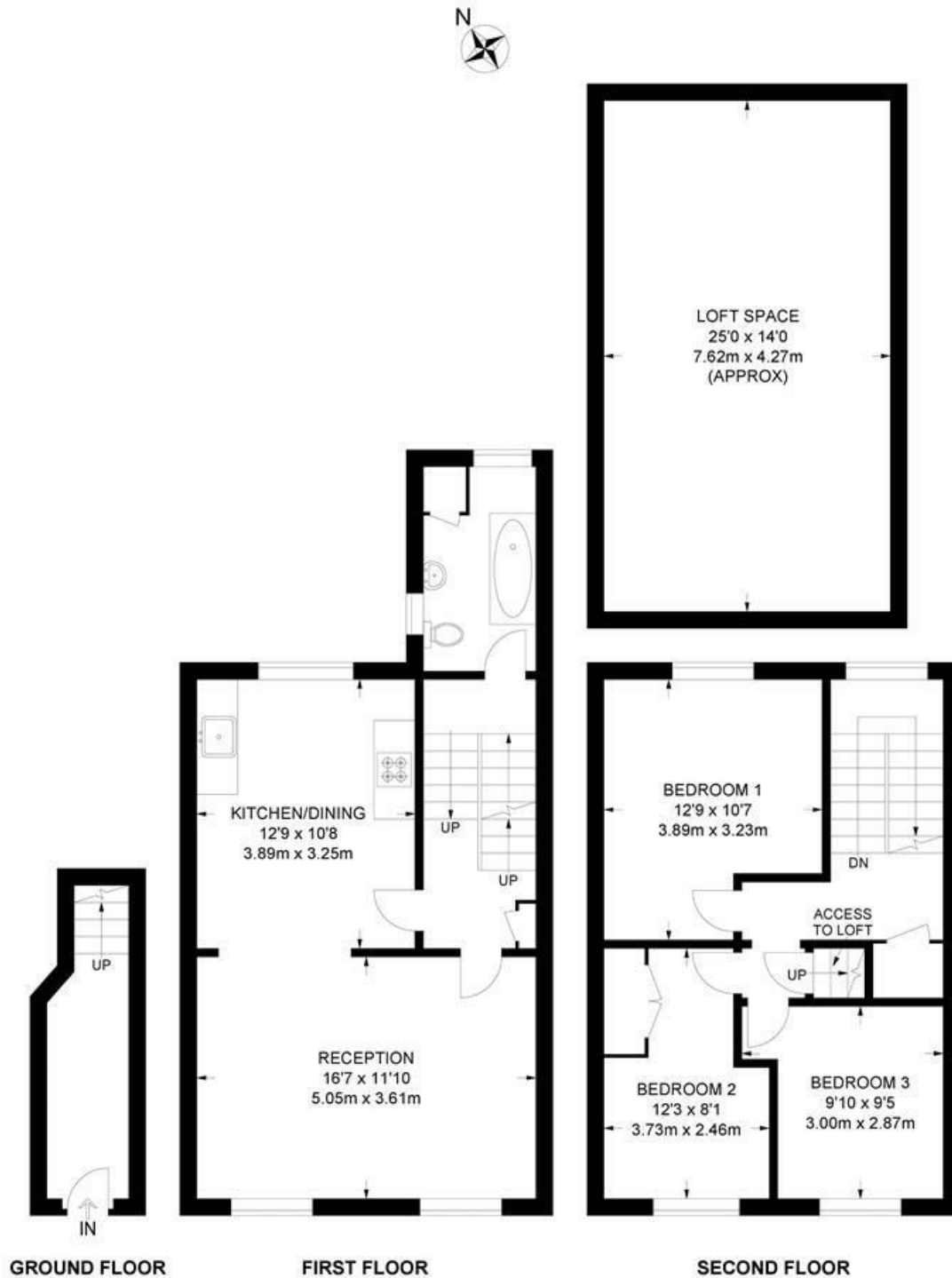
3 Bedroom Flat

APPROXIMATE GROSS INTERNAL AREA WITH LOFT:

1305 SQ FT / 121.2 SQ M

APPROXIMATE GROSS INTERNAL AREA WITHOUT LOFT:

955 SQ FT / 88.7 SQ M



While we try our very best, floor plans are produced as a guide only and we take no responsibility for the precise accuracy with which any property is represented.

Luxor Street, Brixton, SE5

